

CLIENT REVIEW DOCUMENT

UMATILLA, OR

Wayfinding & Signage Program

PROGRAMMING

SIGN LOCATION PLANS

May 2 , 2023

V1-04/02/2023

V2-08/31/2023

merJe

MERJE | ENVIRONMENTS & EXPERIENCES

120 North Church Street

Suite 208

West Chester, PA 19380

T 484.266.0648

www.merjedesign.com

Section 1 – Wayfinding Policy

A. Project Boundary
Proposed Wayfinding Region A.1

Section 2 – Design Development

D. Phasing Menus
Phase 1 Pedestrian - Parking D.1
Phase 2 Vehicular D.2
Phase 3 Village Gateway - Parks ID..... D.3
Phase 4 Building Exterior ID & Interior D.4
Phase 5 Landmark D.5

Section 3 – PROGRAMMING

SL-Town Location Plans Townwide Vehicular
Sign Location Plans Town-Wide..... SL.1

SL-DT Location Plans Downtown Vehicular
Downtown Crop Sign Location Plans SL.22

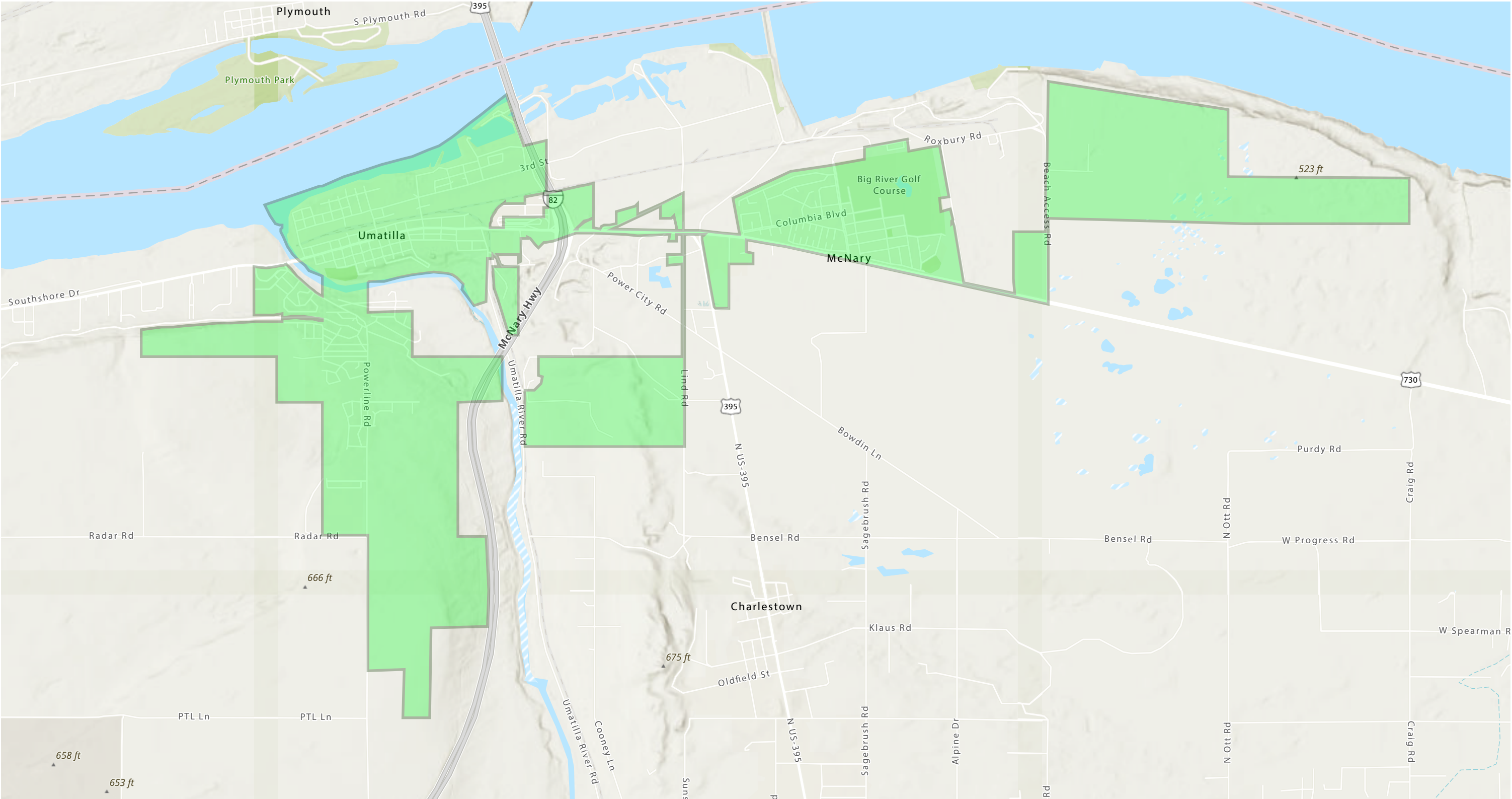
SL-PHOTO Sign Location Photo Details

Table of Contents

SECTION 1 | Wayfinding Policy

A | Project Boundary

PROPOSED WAYFINDING REGION - OVERALL AREA



REVISIONS		
DATE	BY	DESCRIPTION

ENVIRONMENTS & EXPERIENCES

merJe

120 North Church Street
Suite 208
West Chester, PA 19380
T 484.266.0648
www.merjedesign.com

SHEET TITLE

Wayfinding
Boundary

CLIENT / PROJECT

Umatilla, OR
Wayfinding and Signage System

DATE: May 02, 2023

DRAWN BY: GS

SHEET NO. A.1

SECTION 2 | Design Development

D | Phasing Menus



15'-0"

13'-6"

12'-0"

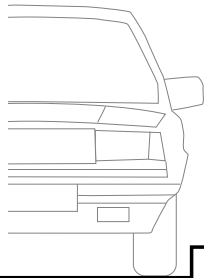
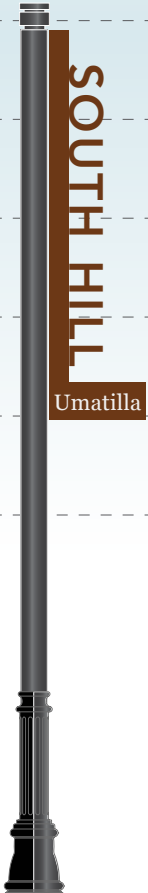
10'-6"

9'-0"

7'-6"

6'-0"

GATE.1
Landmark Gateway
Monumental (Routes 395/730)
By Others



SCALE: 3/4" = 1'-0"

GATE.2
Primary Gateway

GATE.3
Secondary Gateway

GATE.4
Tertiary Gateway

DIST.1.1
District ID

DIST.1.2
District ID

REVISIONS		
DATE	BY	DESCRIPTION

ENVIRONMENTS & EXPERIENCES

merJe

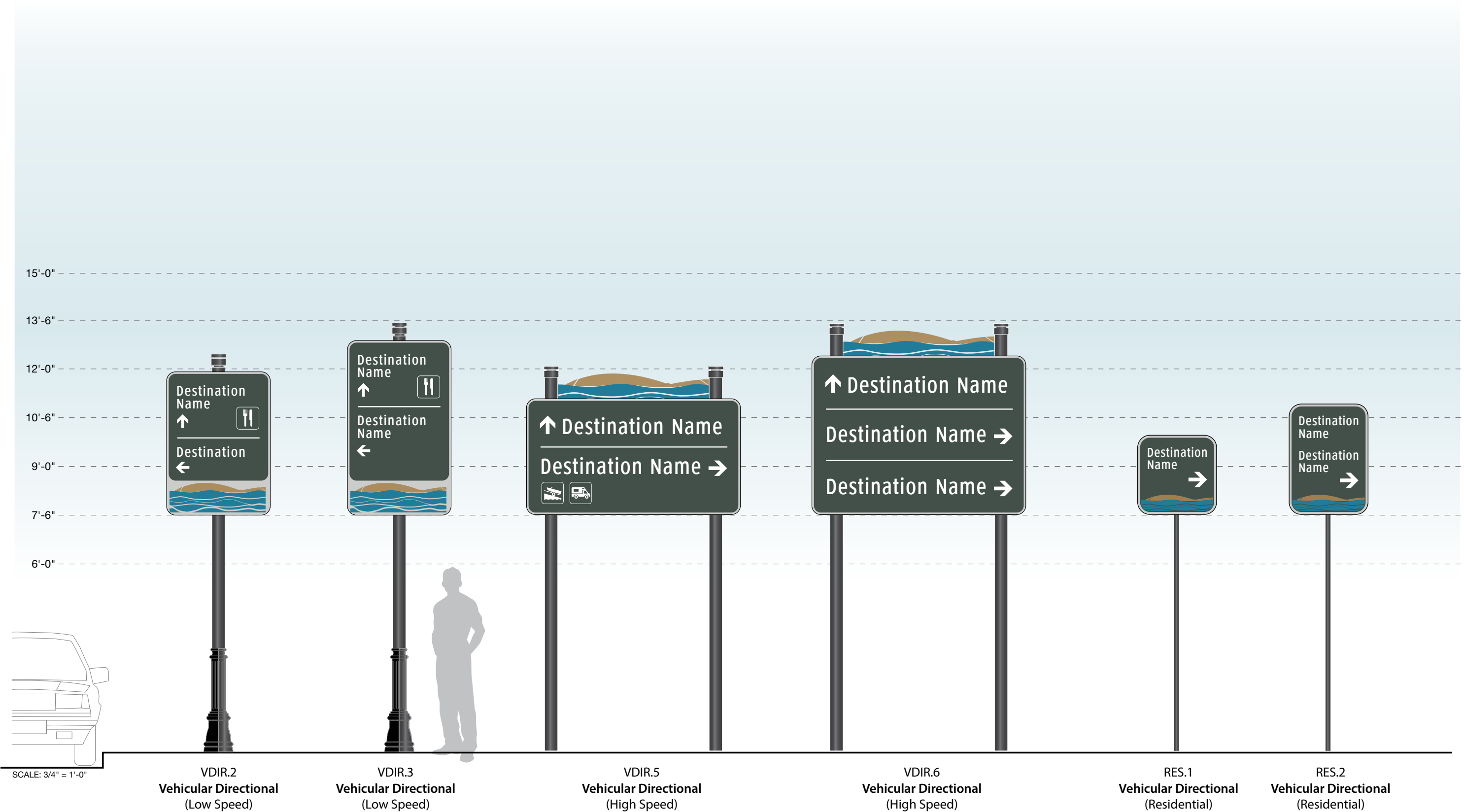
120 North Church Street
Suite 208
West Chester, PA 19380
T 484.266.0648
www.merjedesign.com

SHEET TITLE
Sign Menu City Gateway District Gateway

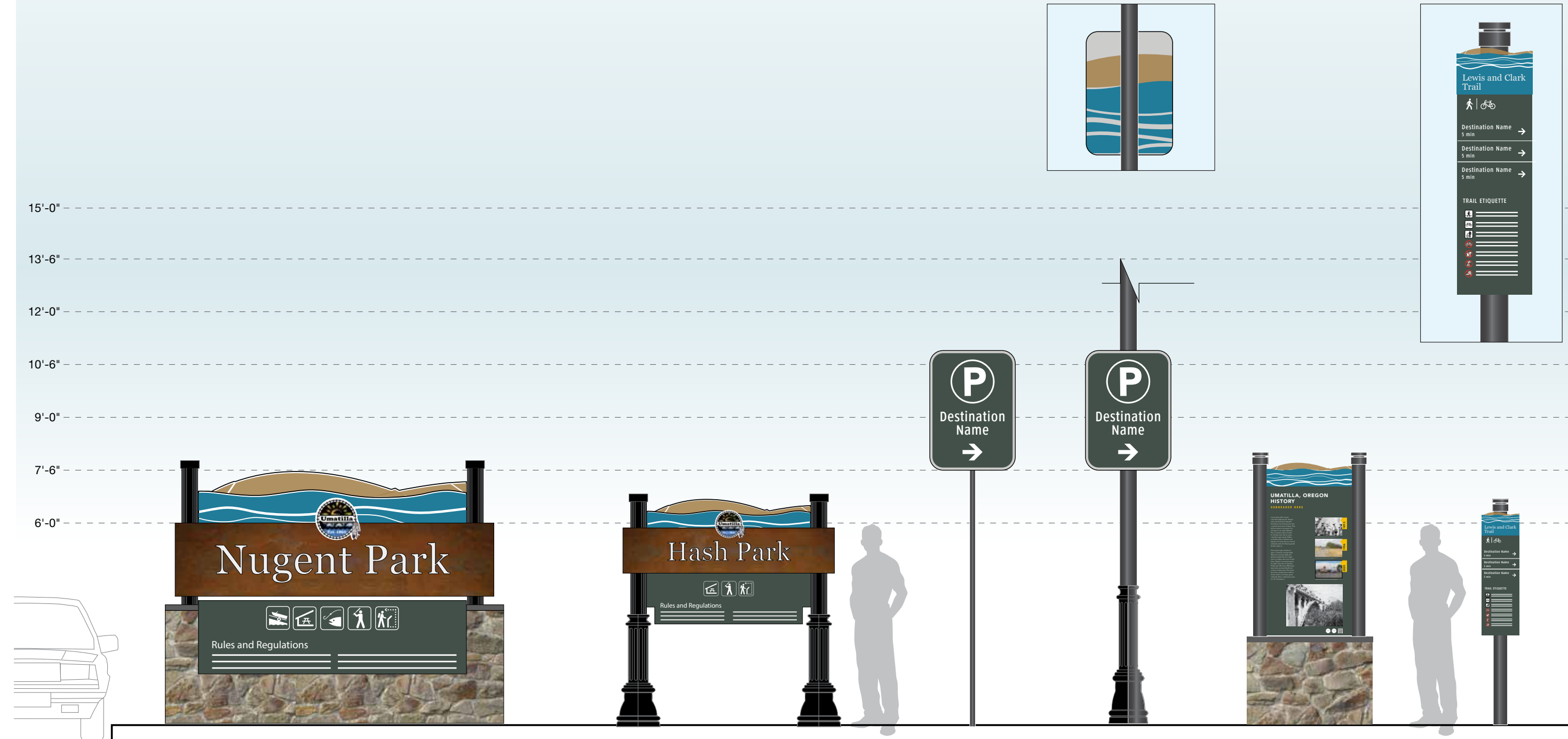
CLIENT / PROJECT
Umatilla, OR Wayfinding and Signage System

--

DATE: May 02, 2023
DRAWN BY: GS
SHEET NO. D.1



REVISIONS			ENVIRONMENTS & EXPERIENCES merJe 120 North Church Street Suite 208 West Chester, PA 19380 T 484.266.0648 www.merjedesign.com	SHEET TITLE Sign Menu Vehicular	CLIENT / PROJECT Umatilla, OR Wayfinding and Signage System		DATE: May 02, 2023	
DATE	BY	DESCRIPTION					DRAWN BY: GS	
							SHEET NO. D.2	



SCALE: 3/4" = 1'-0"

PARK_ID.1
PARKS_Destination ID
(Large)

PARK_ID.2
PARKS_Destination ID
(Small)

PARK.1.1
PARKING DIRECTIONAL
(New Pole)

PARK.1.2
PARKING DIRECTIONAL
(Existing Pole)

KIOSK.1
INFORMATIONAL KIOSK
(History, Culture, Events)
2 or 4 Sided

TRAIL.1
TRAIL DIRECTIONAL/ID
(Existing Pole)

REVISIONS			ENVIRONMENTS & EXPERIENCES <div>merJe</div> <div>120 North Church Street Suite 208 West Chester, PA 19380 T 484.266.0648 www.merjedesign.com</div>	SHEET TITLE <div>Sign Menu Parks, Parking, Pedestrian, Trails</div>	CLIENT / PROJECT <div>Umatilla, OR Wayfinding and Signage System</div>		DATE: May 02, 2023	
DATE	BY	DESCRIPTION					DRAWN BY: GS	
							SHEET NO. <div>D.3</div>	



LANDMARK.1
LETTERS/GRAPHIC/SIGN on top of Welcome Center
(Visible from Bridge)



LANDMARK.2
PAINT Water Tank
(Visible from 395)

REVISIONS		
DATE	BY	DESCRIPTION

ENVIRONMENTS & EXPERIENCES

merJe

120 North Church Street
Suite 208
West Chester, PA 19380
T 484.266.0648
www.merjedesign.com

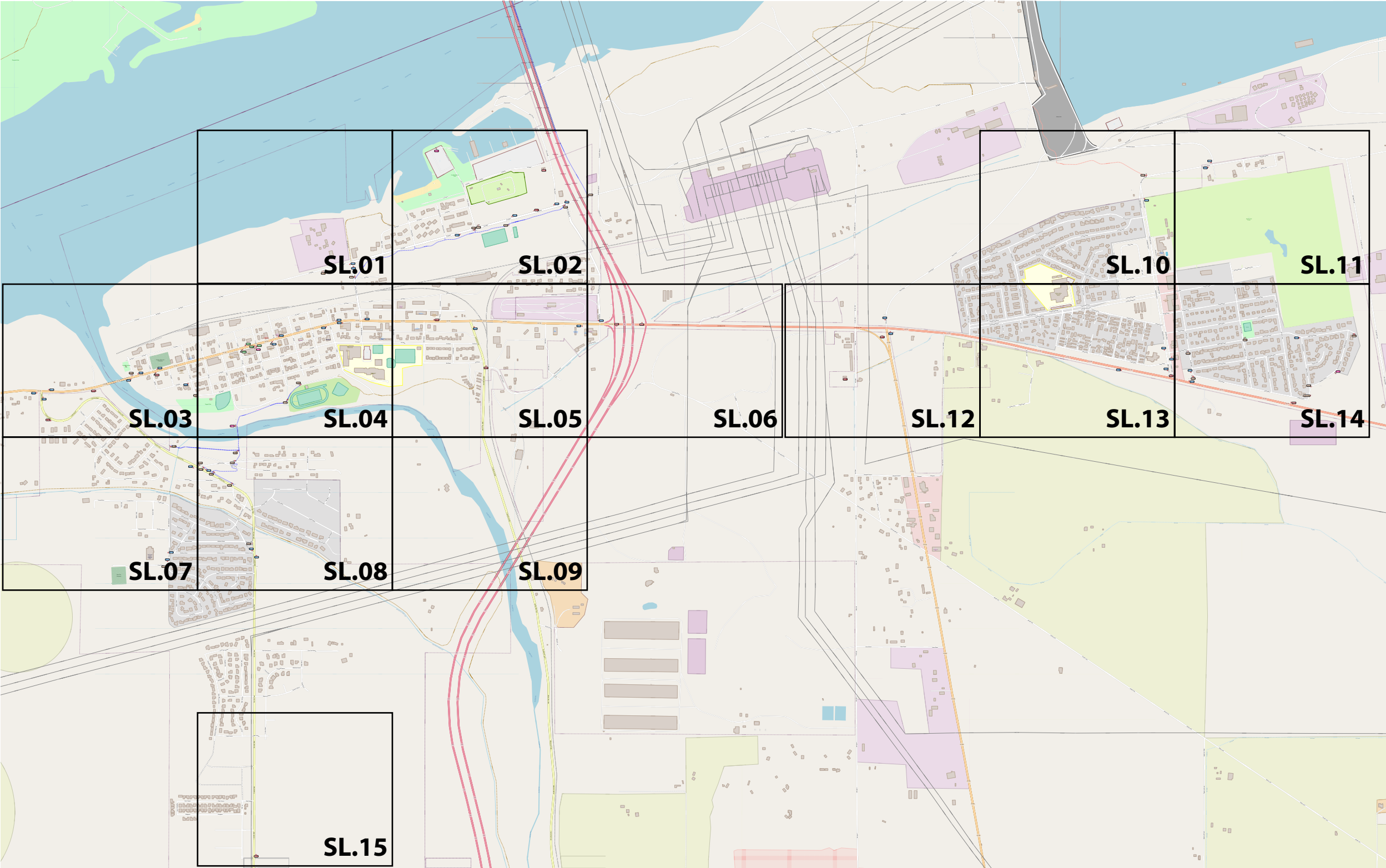
SHEET TITLE
Sign Menu Landmark

CLIENT / PROJECT
Umatilla, OR Wayfinding and Signage System

DATE: May 02, 2023
DRAWN BY: GS
SHEET NO. D.4

SECTION 3 | Programming

SL-TOWN | Location Plans
Townwide



SIGNAGE LEGEND

- 001** Gateways / District ID
- 100** Vehicular
- 500** Parking
- 600** Pedestrian Directional
- 700** Pedestrian Kiosk
- 900** Parks - Trail Signage
- 900** Identification Signage

NOTES:

- General sign locations are provided on these plan sheets.
- The Message Schedule provides more detailed guidance of sign location in the Remarks column.
- Refer to the Message Schedule for the final messages of each sign.
- Utilize the above Legend to help determine sign types, and other details of location.

ENVIRONMENTS & EXPERIENCES

merJe

120 North Church Street
Suite 208
West Chester, PA 19380
T 484.266.0648
www.merjedesign.com

DATE04/02/23

DRAWN BY:GS

These drawings are meant for DESIGN INTENT ONLY and are not for construction. Contractor shall verify and be responsible for all dimensions and conditions of the job. Contractor shall be familiar with the site and conditions it presents. This office must be notified of any variations from the dimensions and conditions shown on this drawing. Shop drawings and details must be submitted to this office for approval prior to proceeding with fabrication. All copy shall be proofread by client and legal requirements checked by legal department.

REVISIONS

CLIENT / PROJECT

Umatilla, OR
Wayfinding and Signage System

PROJECT NO.

SHEET TITLE

Sign Location Plans
City-Wide
Key Plan

SHEET NO.

KEY

SPECIFICATIONS

Refer to the Wayfinding and Signage System design intent documentation for sign type drawings, material call-outs and installation methods.

Refer to the Wayfinding and Signage System message schedule for all sign type messages, location numbers, quantities, and specific location details.

SIGNAGE LEGEND

- 001** Gateways / District ID
- 100** Vehicular
- 500** Parking
- 600** Pedestrian Directional
- 700** Pedestrian Kiosk
- 900** Parks - Trail Signage
- 900** Identification Signage

NOTES:

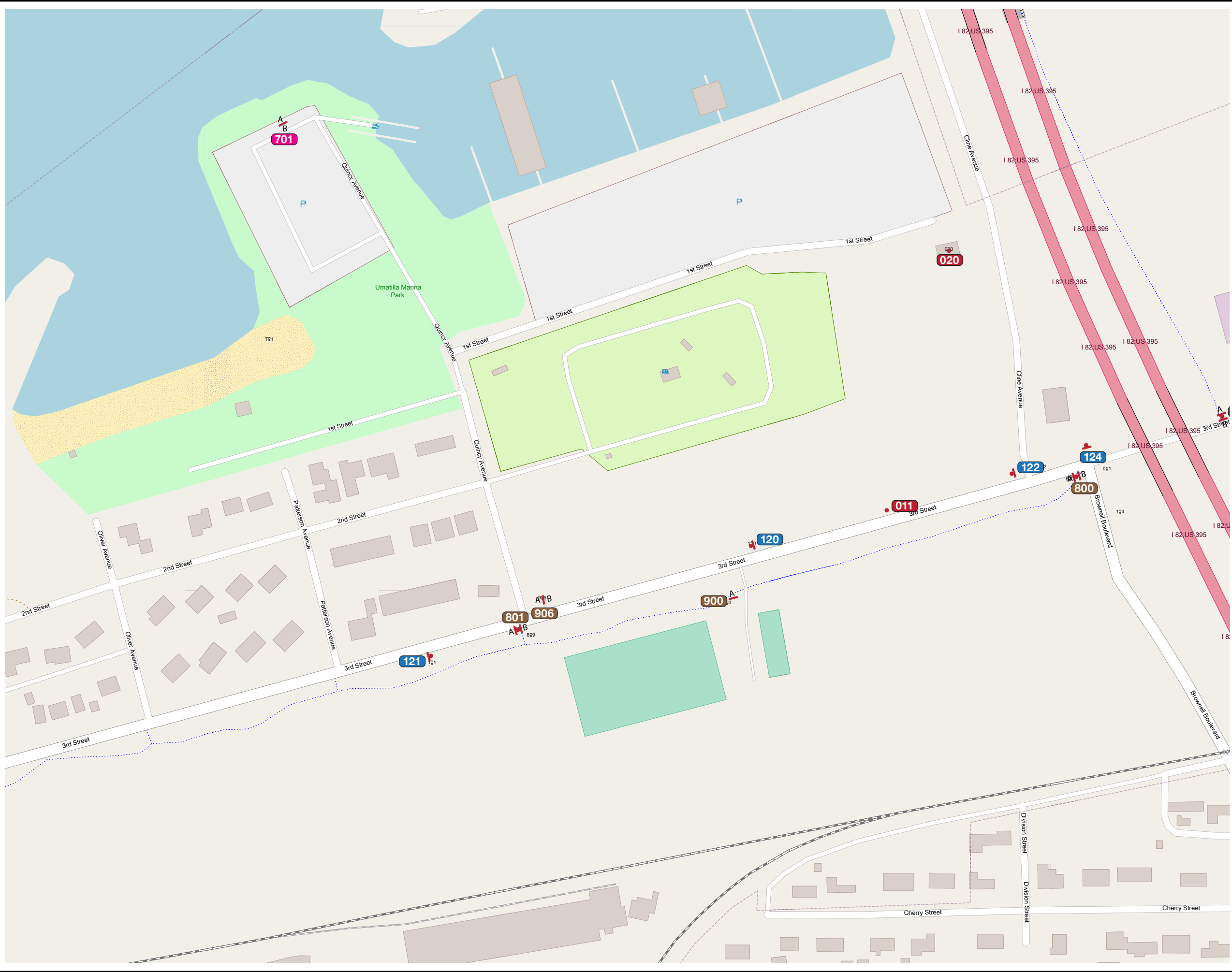
1. General sign locations are provided on these plan sheets.
2. The Message Schedule provides more detailed guidance of sign location in the Remarks column.
3. Refer to the Message Schedule for the final messages of each sign.
4. Utilize the above Legend to help determine sign types, and other details of location.

ENVIRONMENTS & EXPERIENCES

merje

120 North Church Street
Suite 208
West Chester, PA 19380
T 484.266.0648
www.merjedesign.com

DATE	CLIENT / PROJECT Umatilla, OR Wayfinding and Signage System
04/02/23	
DRAWN BY:	
GS	
These drawings are meant for DESIGN INTENT ONLY and are not for construction. Contractor shall verify and be responsible for all dimensions and conditions of the job. Contractor shall be familiar with the site and conditions it presents. This office must be notified of any variations from the dimensions and conditions shown on this drawing. Shop drawings and details must be submitted to this office for approval prior to proceeding with fabrication. All copy shall be proofread by client and legal requirements checked by legal department.	PROJECT NO.
	SHEET TITLE
	Sign Location Plans City-Wide
REVISIONS	
	SHEET NO.
	SL.1



SPECIFICATIONS

Refer to the Wayfinding and Signage System design intent documentation for sign type drawings, material call-outs and installation methods.

Refer to the Wayfinding and Signage System message schedule for all sign type messages, location numbers, quantities, and specific location details.


SIGNAGE LEGEND

001	Gateways / District ID
100	Vehicular
500	Parking
600	Pedestrian Directional
700	Pedestrian Kiosk
900	Parks - Trail Signage
900	Identification Signage

NOTES:

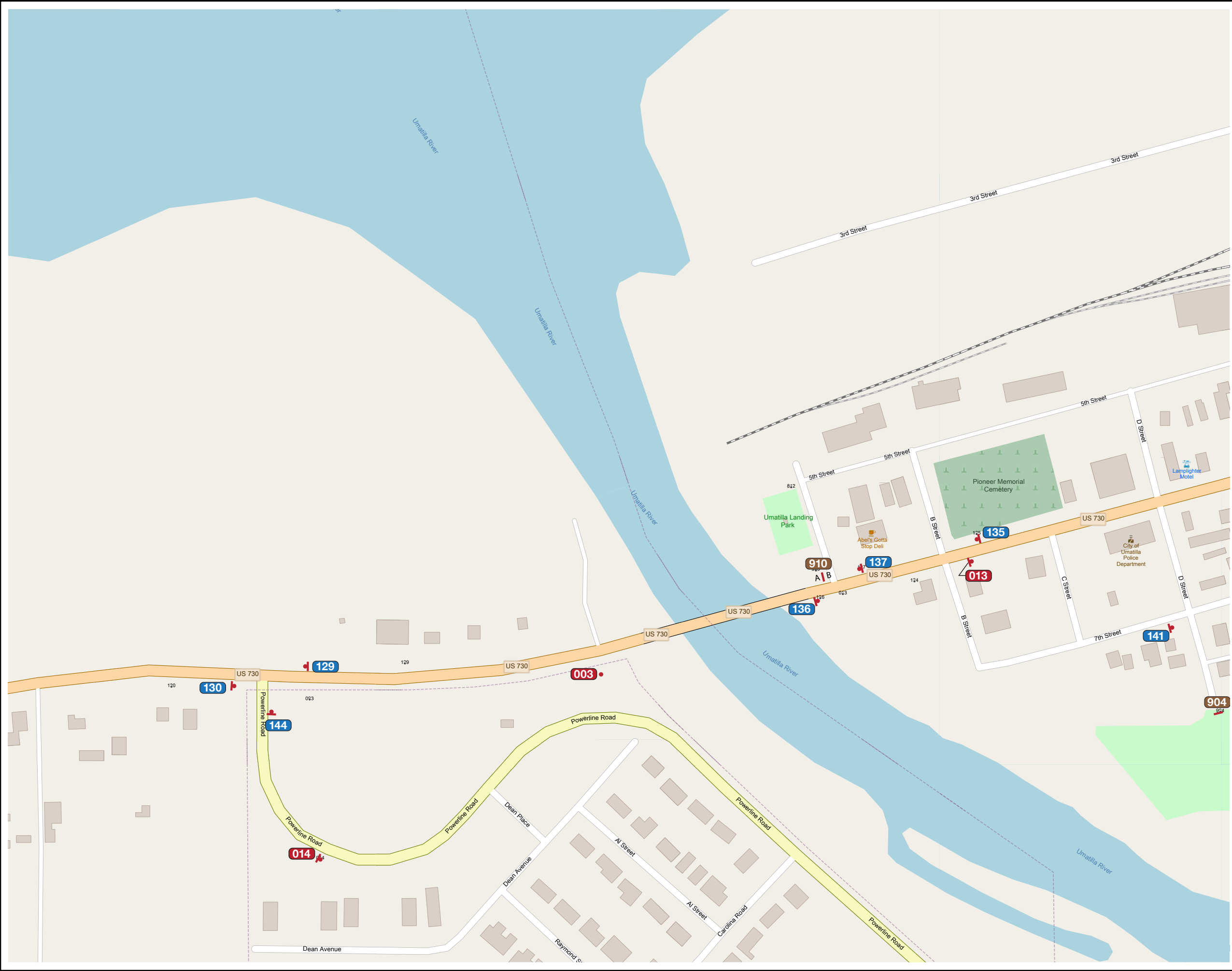
- General sign locations are provided on these plan sheets.
- The Message Schedule provides more detailed guidance of sign location in the Remarks column.
- Refer to the Message Schedule for the final messages of each sign.
- Utilize the above Legend to help determine sign types, and other details of location.

ENVIRONMENTS & EXPERIENCES



120 North Church Street
Suite 208
West Chester, PA 19380
T 484.266.0648
www.merjedesign.com

DATE	04/02/23	CLIENT / PROJECT
DRAWN BY:	GS	
These drawings are meant for DESIGN INTENT ONLY and are not for construction. Contractor shall verify and be responsible for all dimensions and conditions of the job. Contractor shall be familiar with the site and conditions it presents. This office must be notified of any variations from the dimensions and conditions shown on this drawing. Shop drawings and details must be submitted to this office for approval prior to proceeding with fabrication. All copy shall be proofread by client and legal requirements checked by legal department.		
REVISIONS		PROJECT NO.
		SHEET TITLE
		Sign Location Plans City-Wide
		SHEET NO.
		SL.2



SPECIFICATIONS

Refer to the Wayfinding and Signage System design intent documentation for sign type drawings, material call-outs and installation methods.

Refer to the Wayfinding and Signage System message schedule for all sign type messages, location numbers, quantities, and specific location details.

SIGNAGE LEGEND

- 001** Gateways / District ID
- 100** Vehicular
- 500** Parking
- 600** Pedestrian Directional
- 700** Pedestrian Kiosk
- 900** Parks - Trail Signage
- 900** Identification Signage

NOTES:

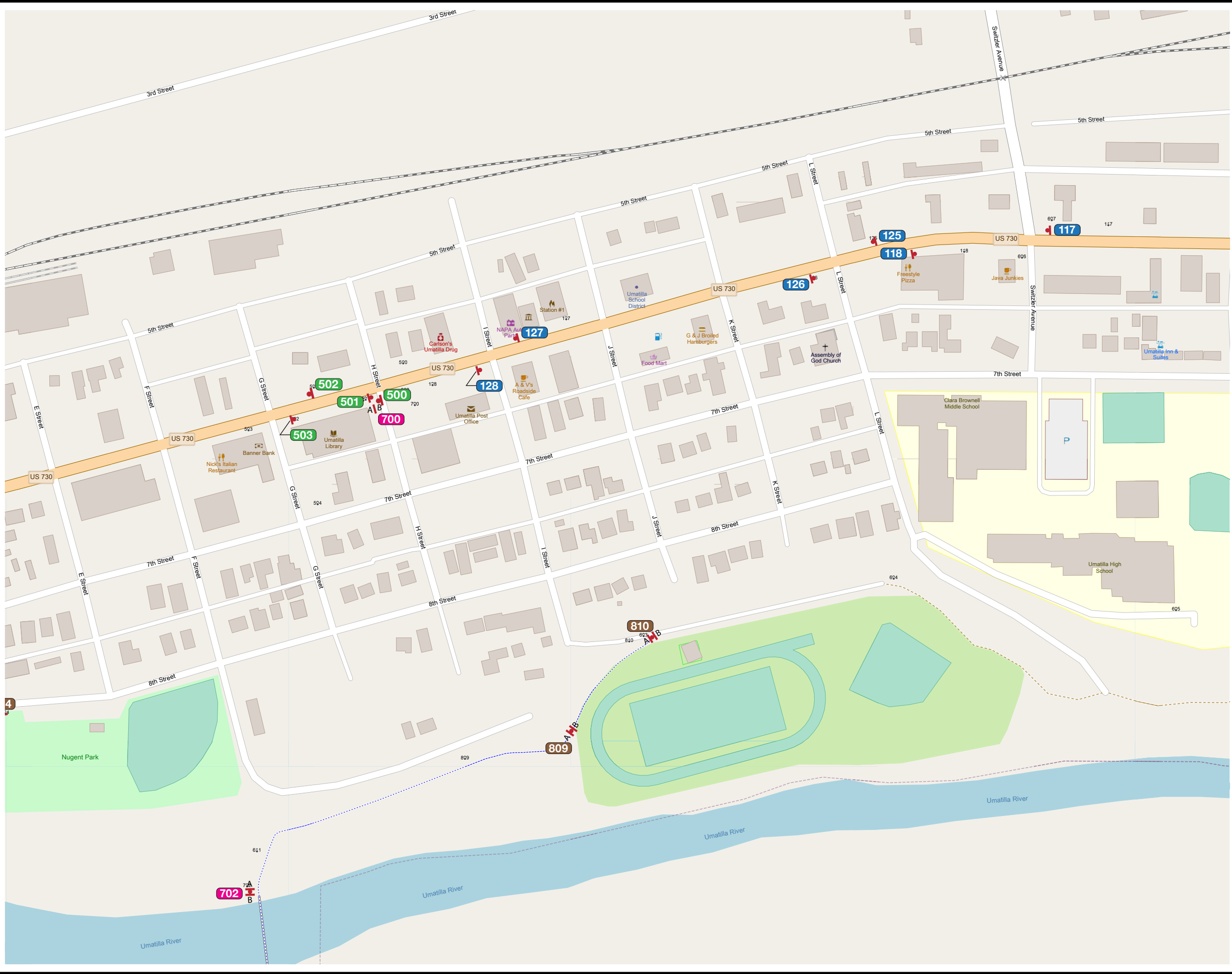
- General sign locations are provided on these plan sheets.
- The Message Schedule provides more detailed guidance of sign location in the Remarks column.
- Refer to the Message Schedule for the final messages of each sign.
- Utilize the above Legend to help determine sign types, and other details of location.

ENVIRONMENTS & EXPERIENCES

merJe

120 North Church Street
Suite 208
West Chester, PA 19380
T 484.266.0648
www.merjedesign.com

DATE	04/02/23	CLIENT / PROJECT
DRAWN BY:	GS	
These drawings are meant for DESIGN INTENT ONLY and are not for construction. Contractor shall verify and be responsible for all dimensions and conditions of the job. Contractor shall be familiar with the site and conditions it presents. This office must be notified of any variations from the dimensions and conditions shown on this drawing. Shop drawings and details must be submitted to this office for approval prior to proceeding with fabrication. All copy shall be proofread by client and legal requirements checked by legal department.		Umatilla, OR Wayfinding and Signage System
REVISIONS		PROJECT NO.
		SHEET TITLE
		Sign Location Plans City-Wide
		SHEET NO.
		SL.3



SPECIFICATIONS

Refer to the Wayfinding and Signage System design intent documentation for sign type drawings, material call-outs and installation methods.

Refer to the Wayfinding and Signage System message schedule for all sign type messages, location numbers, quantities, and specific location details.

SIGNAGE LEGEND

001

Gateways / District ID

100

Vehicular

500

Parking

600

Pedestrian Directional

700

Pedestrian Kiosk

900

Parks - Trail Signage

900

Identification Signage

NOTES:

1. General sign locations are provided on these plan sheets.

2. The Message Schedule provides more detailed guidance of sign location in the Remarks column.

3. Refer to the Message Schedule for the final messages of each sign.

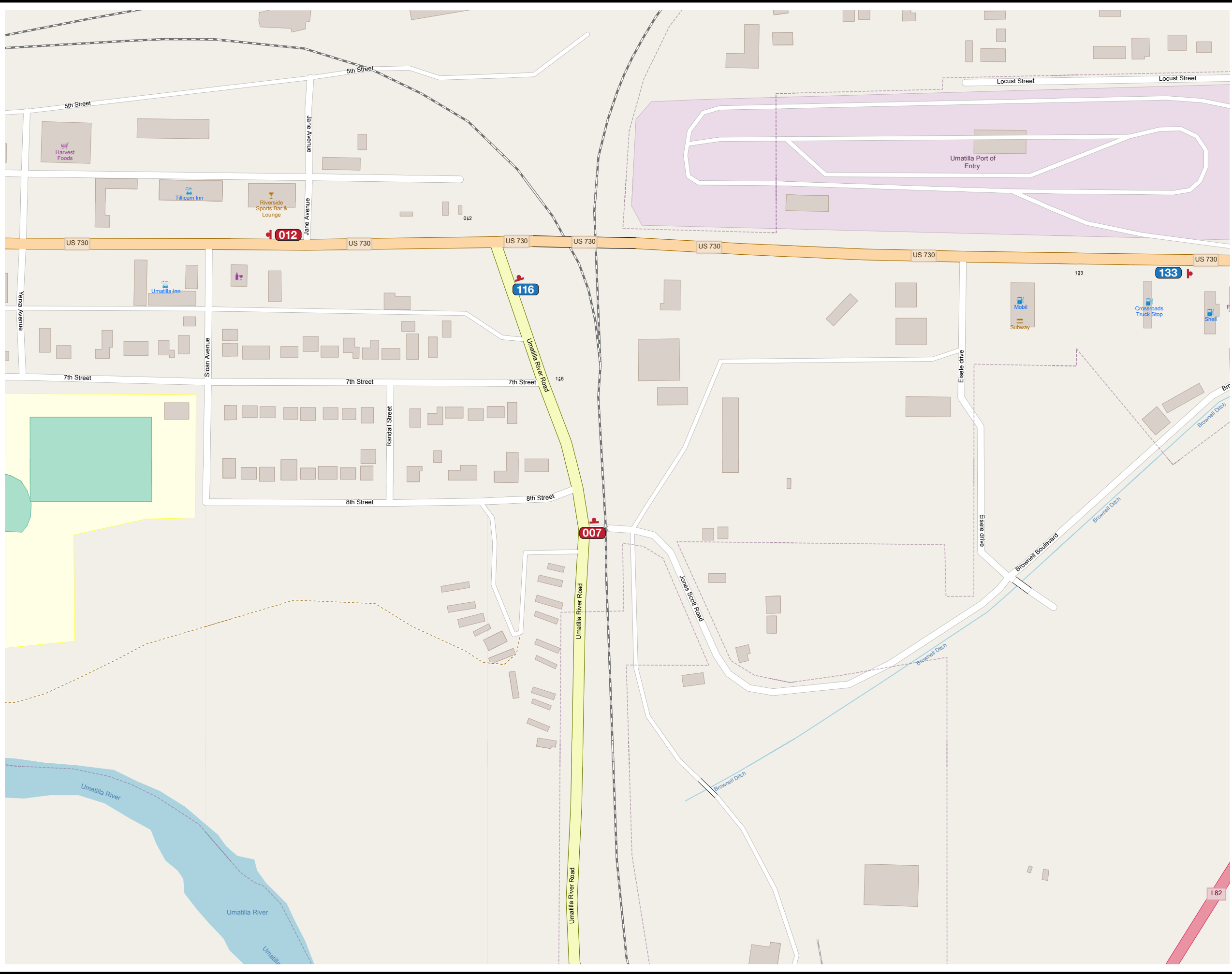
4. Utilize the above Legend to help determine sign types, and other details of location.

ENVIRONMENTS & EXPERIENCES

merJe

120 North Church Street
Suite 208
West Chester, PA 19380
T 484.266.0648
www.merjedesign.com

DATE	04/02/23	CLIENT / PROJECT
DRAWN BY:	GS	
These drawings are meant for DESIGN INTENT ONLY and are not for construction. Contractor shall verify and be responsible for all dimensions and conditions of the job. Contractor shall be familiar with the site and conditions it presents. This office must be notified of any variations from the dimensions and conditions shown on this drawing. Shop drawings and details must be submitted to this office for approval prior to proceeding with fabrication. All copy shall be proofread by client and legal requirements checked by legal department.		Umatilla, OR Wayfinding and Signage System
REVISIONS		PROJECT NO.
		SHEET TITLE
		Sign Location Plans City-Wide
		SHEET NO.
		SL.4



SPECIFICATIONS

Refer to the Wayfinding and Signage System design intent documentation for sign type drawings, material call-outs and installation methods.

Refer to the Wayfinding and Signage System message schedule for all sign type messages, location numbers, quantities, and specific location details.

SIGNAGE LEGEND

001

Gateways / District ID

100

Vehicular

500

Parking

600

Pedestrian Directional

700

Pedestrian Kiosk

900

Parks - Trail Signage

900

Identification Signage

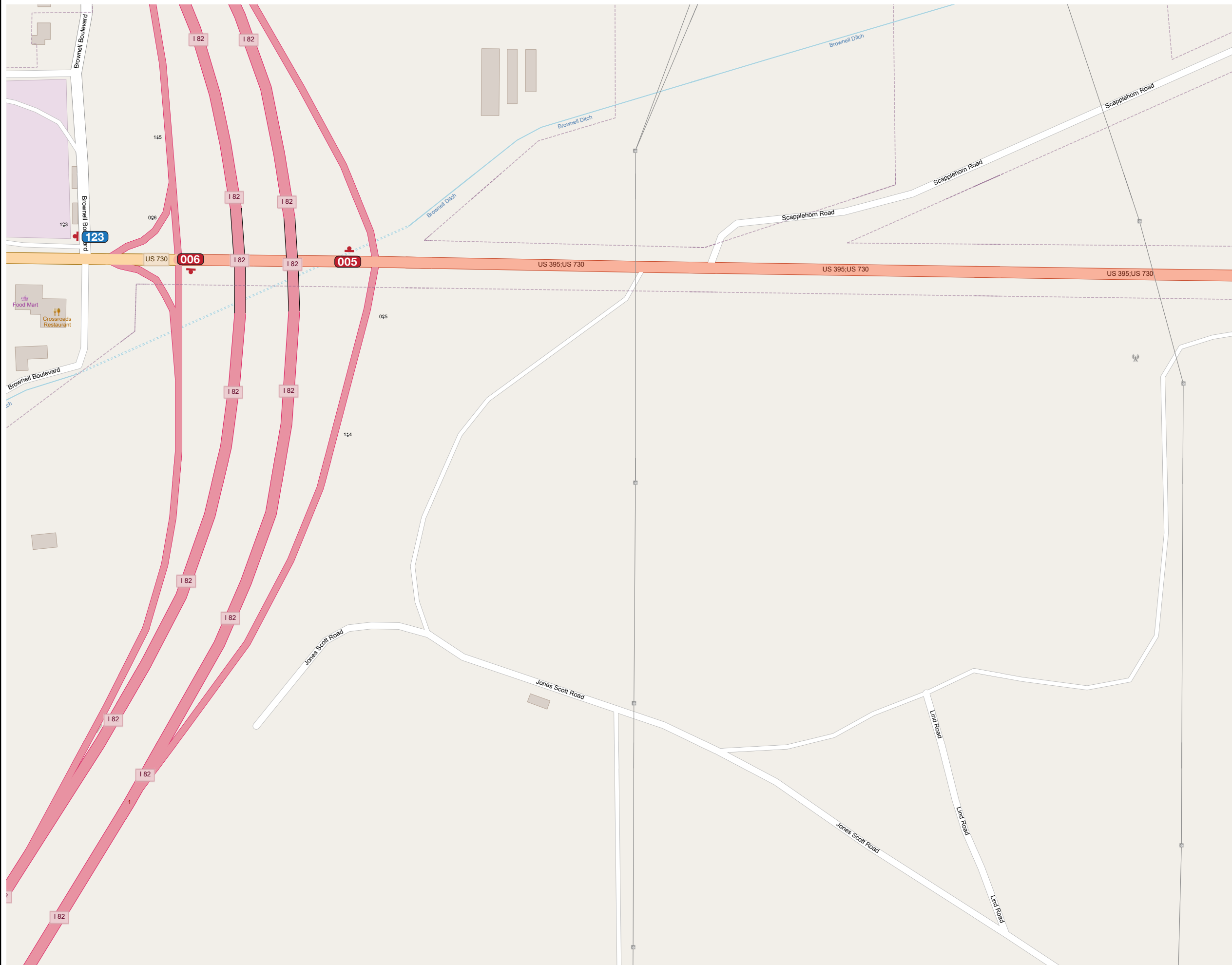
- NOTES:
- General sign locations are provided on these plan sheets.
 - The Message Schedule provides more detailed guidance of sign location in the Remarks column.
 - Refer to the Message Schedule for the final messages of each sign.
 - Utilize the above Legend to help determine sign types, and other details of location.

ENVIRONMENTS & EXPERIENCES

merJe

120 North Church Street
Suite 208
West Chester, PA 19380
T 484.266.0648
www.merjedesign.com

DATE	04/02/23	CLIENT / PROJECT
DRAWN BY:	GS	
These drawings are meant for DESIGN INTENT ONLY and are not for construction. Contractor shall verify and be responsible for all dimensions and conditions of the job. Contractor shall be familiar with the site and conditions it presents. This office must be notified of any variations from the dimensions and conditions shown on this drawing. Shop drawings and details must be submitted to this office for approval prior to proceeding with fabrication. All copy shall be proofread by client and legal requirements checked by legal department.		Umatilla, OR Wayfinding and Signage System
REVISIONS		PROJECT NO.
		SHEET TITLE
		Sign Location Plans City-Wide
		SHEET NO.
		SL.5



SPECIFICATIONS

Refer to the Wayfinding and Signage System design intent documentation for sign type drawings, material call-outs and installation methods.

Refer to the Wayfinding and Signage System message schedule for all sign type messages, location numbers, quantities, and specific location details.

SIGNAGE LEGEND

- 001** Gateways / District ID
- 100** Vehicular
- 500** Parking
- 600** Pedestrian Directional
- 700** Pedestrian Kiosk
- 900** Parks - Trail Signage
- 900** Identification Signage

NOTES:

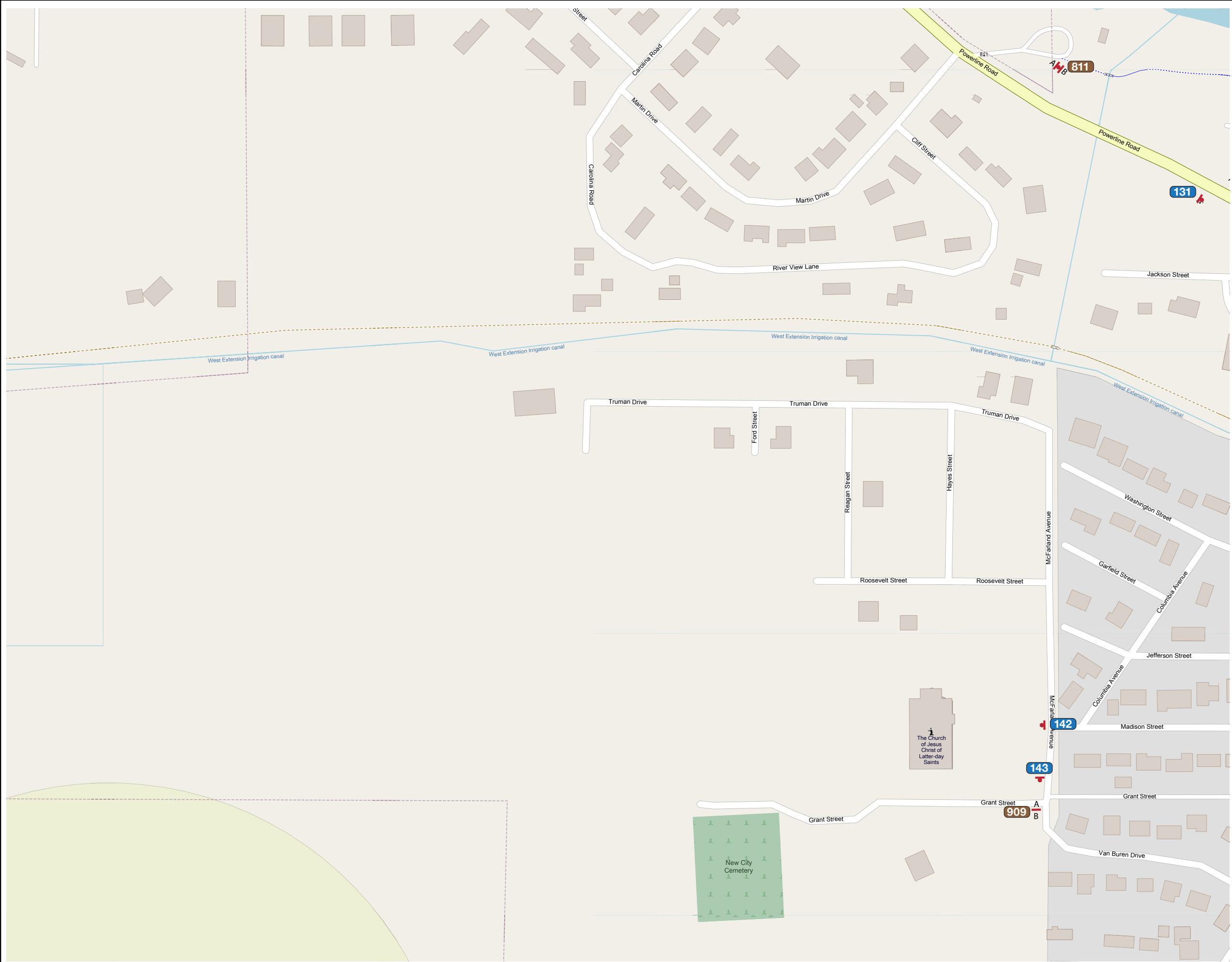
1. General sign locations are provided on these plan sheets.
2. The Message Schedule provides more detailed guidance of sign location in the Remarks column.
3. Refer to the Message Schedule for the final messages of each sign.
4. Utilize the above Legend to help determine sign types, and other details of location.

ENVIRONMENTS & EXPERIENCES

merje

120 North Church Street
Suite 208
West Chester, PA 19380
T 484.266.0648
www.merjedesign.com

DATE	04/02/23	CLIENT / PROJECT	Umatilla, OR
DRAWN BY:	GS	Wayfinding and Signage System	
<p>These drawings are meant for DESIGN INTENT ONLY and are not for construction. Contractor shall verify and be responsible for all dimensions and conditions of the job. Contractor shall be familiar with the site and conditions it presents. This office must be notified of any variations from the dimensions and conditions shown on this drawing. Shop drawings and details must be submitted to this office for approval prior to proceeding with fabrication. All copy shall be proofread by client and legal requirements checked by legal department.</p>		PROJECT NO.	
REVISIONS		SHEET TITLE	Sign Location Plans City-Wide
		SHEET NO.	SL.6



SPECIFICATIONS

Refer to the Wayfinding and Signage System design intent documentation for sign type drawings, material call-outs and installation methods.

Refer to the Wayfinding and Signage System message schedule for all sign type messages, location numbers, quantities, and specific location details.

SIGNAGE LEGEND

001

Gateways / District ID

100

Vehicular

500

Parking

600

Pedestrian Directional

700

Pedestrian Kiosk

900

Parks - Trail Signage

900

Identification Signage

NOTES:

1. General sign locations are provided on these plan sheets.

2. The Message Schedule provides more detailed guidance of sign location in the Remarks column.

3. Refer to the Message Schedule for the final messages of each sign.

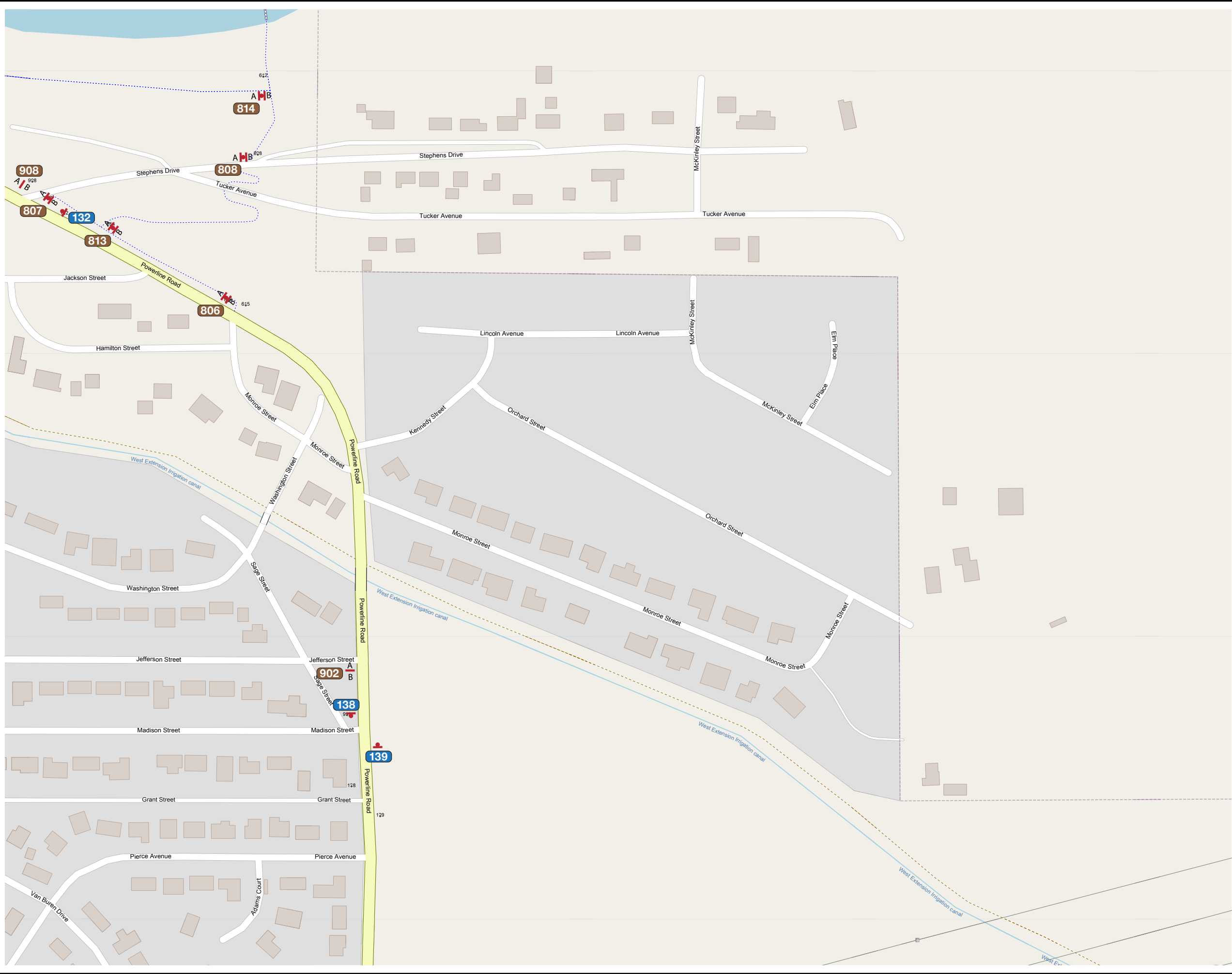
4. Utilize the above Legend to help determine sign types, and other details of location.

ENVIRONMENTS & EXPERIENCES

merJe

120 North Church Street
Suite 208
West Chester, PA 19380
T 484.266.0648
www.merjedesign.com

DATE	04/02/23	CLIENT / PROJECT
DRAWN BY:	GS	
<div>These drawings are meant for DESIGN INTENT ONLY and are not for construction. Contractor shall verify and be responsible for all dimensions and conditions of the job. Contractor shall be familiar with the site and conditions it presents. This office must be notified of any variations from the dimensions and conditions shown on this drawing. Shop drawings and details must be submitted to this office for approval prior to proceeding with fabrication. All copy shall be proofread by client and legal requirements checked by legal department.</div>		Wayfinding and Signage System
REVISIONS		PROJECT NO.
		SHEET TITLE
		Sign Location Plans City-Wide
		SHEET NO.
		SL.7



SPECIFICATIONS

Refer to the Wayfinding and Signage System design intent documentation for sign type drawings, material call-outs and installation methods.

Refer to the Wayfinding and Signage System message schedule for all sign type messages, location numbers, quantities, and specific location details.

SIGNAGE LEGEND

001

Gateways / District ID

100

Vehicular

500

Parking

600

Pedestrian Directional

700

Pedestrian Kiosk

900

Parks - Trail Signage

900

Identification Signage

NOTES:

1. General sign locations are provided on these plan sheets.

2. The Message Schedule provides more detailed guidance of sign location in the Remarks column.

3. Refer to the Message Schedule for the final messages of each sign.

4. Utilize the above Legend to help determine sign types, and other details of location.

ENVIRONMENTS & EXPERIENCES

merJe

120 North Church Street
Suite 208
West Chester, PA 19380
T 484.266.0648
www.merjedesign.com

DATE	04/02/23	CLIENT / PROJECT
DRAWN BY:	GS	
These drawings are meant for DESIGN INTENT ONLY and are not for construction. Contractor shall verify and be responsible for all dimensions and conditions of the job. Contractor shall be familiar with the site and conditions it presents. This office must be notified of any variations from the dimensions and conditions shown on this drawing. Shop drawings and details must be submitted to this office for approval prior to proceeding with fabrication. All copy shall be proofread by client and legal requirements checked by legal department.		Umatilla, OR Wayfinding and Signage System
REVISIONS		PROJECT NO.
		SHEET TITLE
		Sign Location Plans City-Wide
		SHEET NO.
		SL.8



SPECIFICATIONS

Refer to the Wayfinding and Signage System design intent documentation for sign type drawings, material call-outs and installation methods.

Refer to the Wayfinding and Signage System message schedule for all sign type messages, location numbers, quantities, and specific location details.

SIGNAGE LEGEND

001

Gateways / District ID

100

Vehicular

500

Parking

600

Pedestrian Directional

700

Pedestrian Kiosk

900

Parks - Trail Signage

900

Identification Signage

NOTES:

1. General sign locations are provided on these plan sheets.

2. The Message Schedule provides more detailed guidance of sign location in the Remarks column.

3. Refer to the Message Schedule for the final messages of each sign.

4. Utilize the above Legend to help determine sign types, and other details of location.

ENVIRONMENTS & EXPERIENCES

merJe

120 North Church Street
Suite 208
West Chester, PA 19380
T 484.266.0648
www.merjedesign.com

DATE04/02/23

DRAWN BY:GS

These drawings are meant for DESIGN INTENT ONLY and are not for construction. Contractor shall verify and be responsible for all dimensions and conditions of the job. Contractor shall be familiar with the site and conditions it presents. This office must be notified of any variations from the dimensions and conditions shown on this drawing. Shop drawings and details must be submitted to this office for approval prior to proceeding with fabrication. All copy shall be proofread by client and legal requirements checked by legal department.

REVISIONS

CLIENT / PROJECT

Umatilla, OR

Wayfinding and Signage System

PROJECT NO.

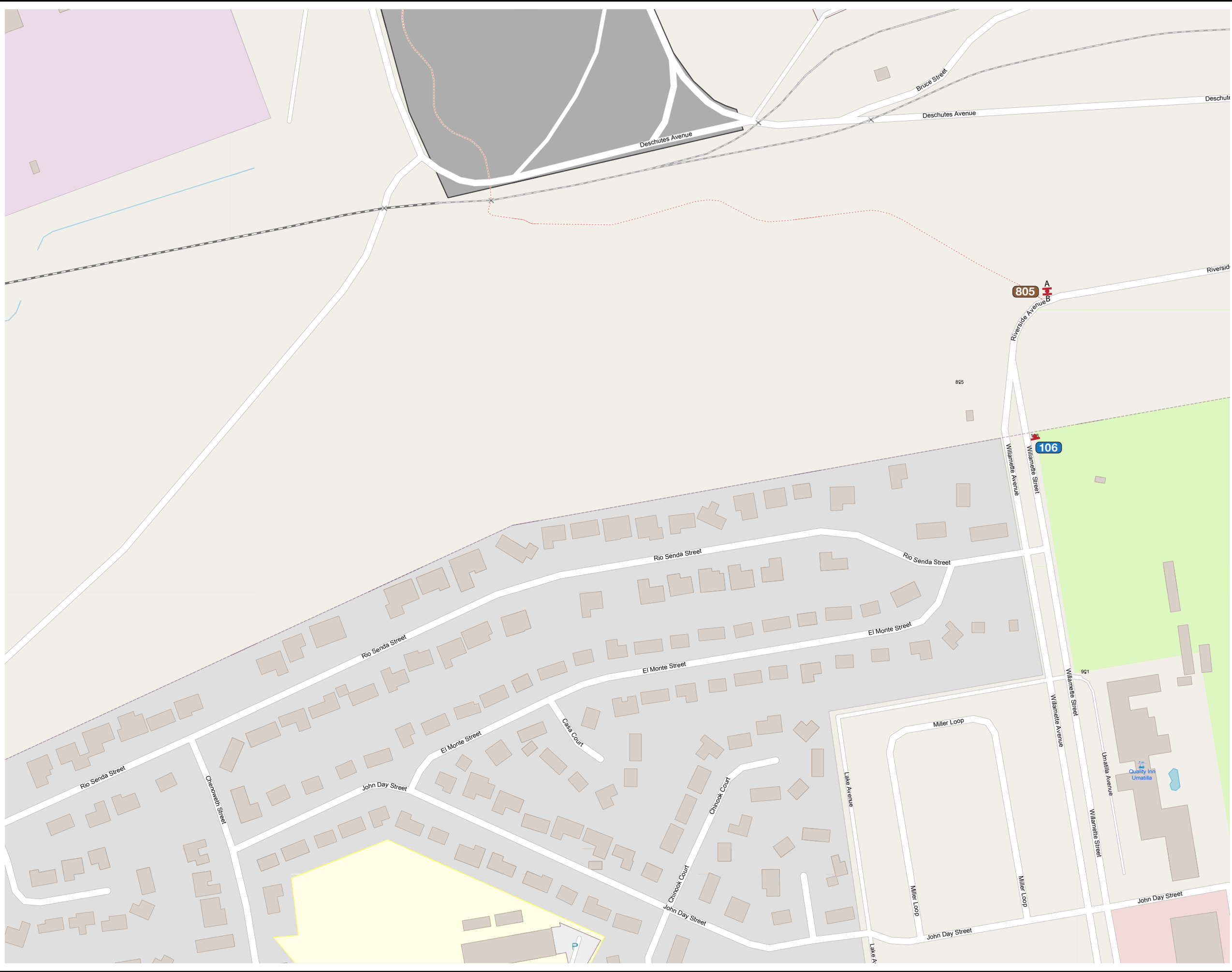
SHEET TITLE

Sign Location Plans

City-Wide

SHEET NO.

SL.9



SPECIFICATIONS

Refer to the Wayfinding and Signage System design intent documentation for sign type drawings, material call-outs and installation methods.

Refer to the Wayfinding and Signage System message schedule for all sign type messages, location numbers, quantities, and specific location details.

SIGNAGE LEGEND

001

Gateways / District ID

100

Vehicular

500

Parking

600

Pedestrian Directional

700

Pedestrian Kiosk

900

Parks - Trail Signage

900

Identification Signage

NOTES:

1. General sign locations are provided on these plan sheets.

2. The Message Schedule provides more detailed guidance of sign location in the Remarks column.

3. Refer to the Message Schedule for the final messages of each sign.

4. Utilize the above Legend to help determine sign types, and other details of location.

ENVIRONMENTS & EXPERIENCES

merJe

120 North Church Street
Suite 208
West Chester, PA 19380
T 484.266.0648
www.merjedesign.com

DATE	04/02/23	CLIENT / PROJECT
DRAWN BY:	GS	
These drawings are meant for DESIGN INTENT ONLY and are not for construction. Contractor shall verify and be responsible for all dimensions and conditions of the job. Contractor shall be familiar with the site and conditions it presents. This office must be notified of any variations from the dimensions and conditions shown on this drawing. Shop drawings and details must be submitted to this office for approval prior to proceeding with fabrication. All copy shall be proofread by client and legal requirements checked by legal department.		Wayfinding and Signage System
REVISIONS		PROJECT NO.
		SHEET TITLE
		Sign Location Plans City-Wide
		SHEET NO.
		SL.10



SPECIFICATIONS

Refer to the Wayfinding and Signage System design intent documentation for sign type drawings, material call-outs and installation methods.

Refer to the Wayfinding and Signage System message schedule for all sign type messages, location numbers, quantities, and specific location details.

SIGNAGE LEGEND

001

Gateways / District ID

100

Vehicular

500

Parking

600

Pedestrian Directional

700

Pedestrian Kiosk

900

Parks - Trail Signage

900

Identification Signage

NOTES:

1. General sign locations are provided on these plan sheets.

2. The Message Schedule provides more detailed guidance of sign location in the Remarks column.

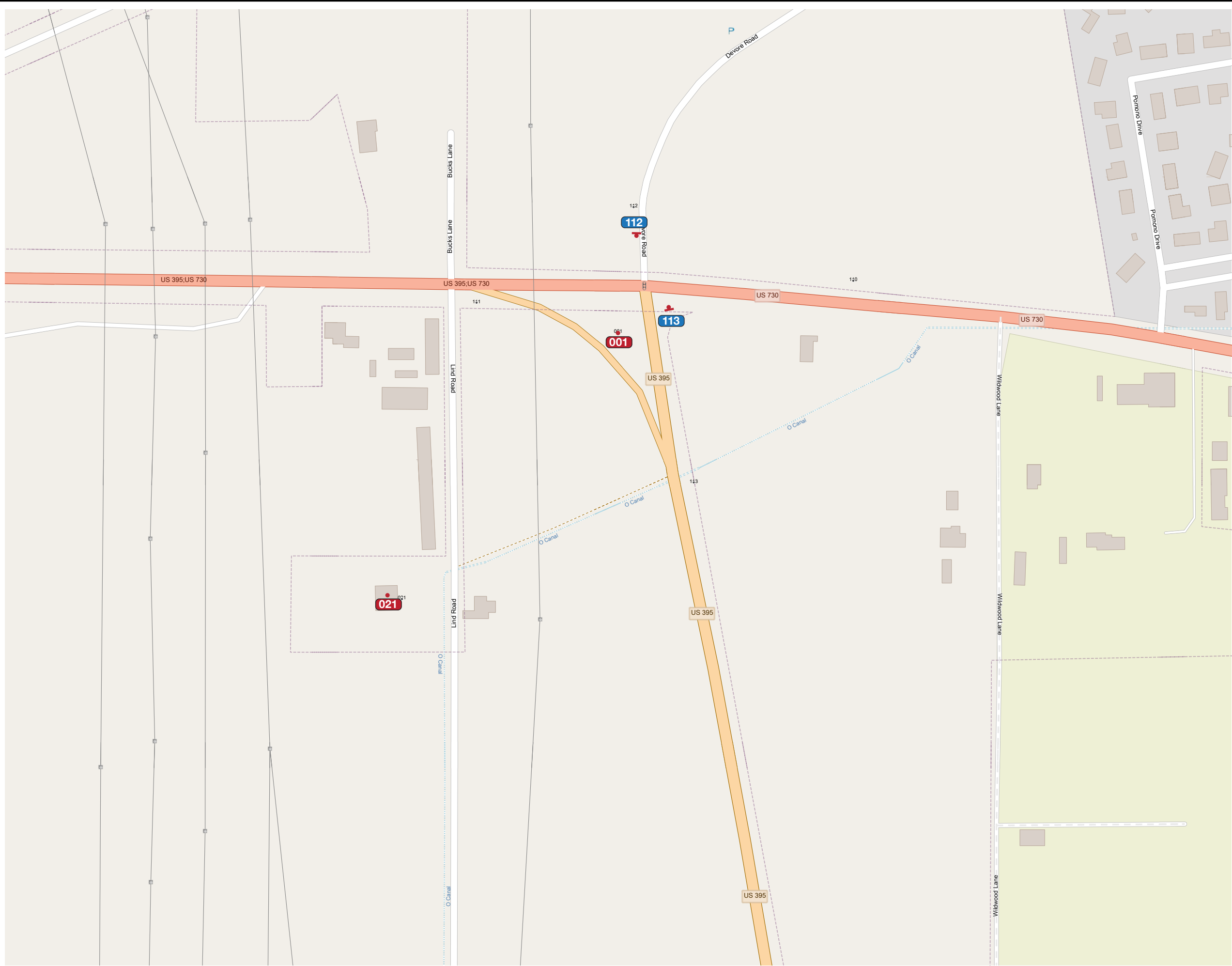
3. Refer to the Message Schedule for the final messages of each sign.

4. Utilize the above Legend to help determine sign types, and other details of location.

ENVIRONMENTS & EXPERIENCES

merJe

120 North Church Street
Suite 208
West Chester, PA 19380
T 484.266.0648
www.merjedesign.com



SPECIFICATIONS

Refer to the Wayfinding and Signage System design intent documentation for sign type drawings, material call-outs and installation methods.

Refer to the Wayfinding and Signage System message schedule for all sign type messages, location numbers, quantities, and specific location details.

SIGNAGE LEGEND

001

Gateways / District ID

100

Vehicular

500

Parking

600

Pedestrian Directional

700

Pedestrian Kiosk

900

Parks - Trail Signage

900

Identification Signage

NOTES:

1. General sign locations are provided on these plan sheets.

2. The Message Schedule provides more detailed guidance of sign location in the Remarks column.

3. Refer to the Message Schedule for the final messages of each sign.

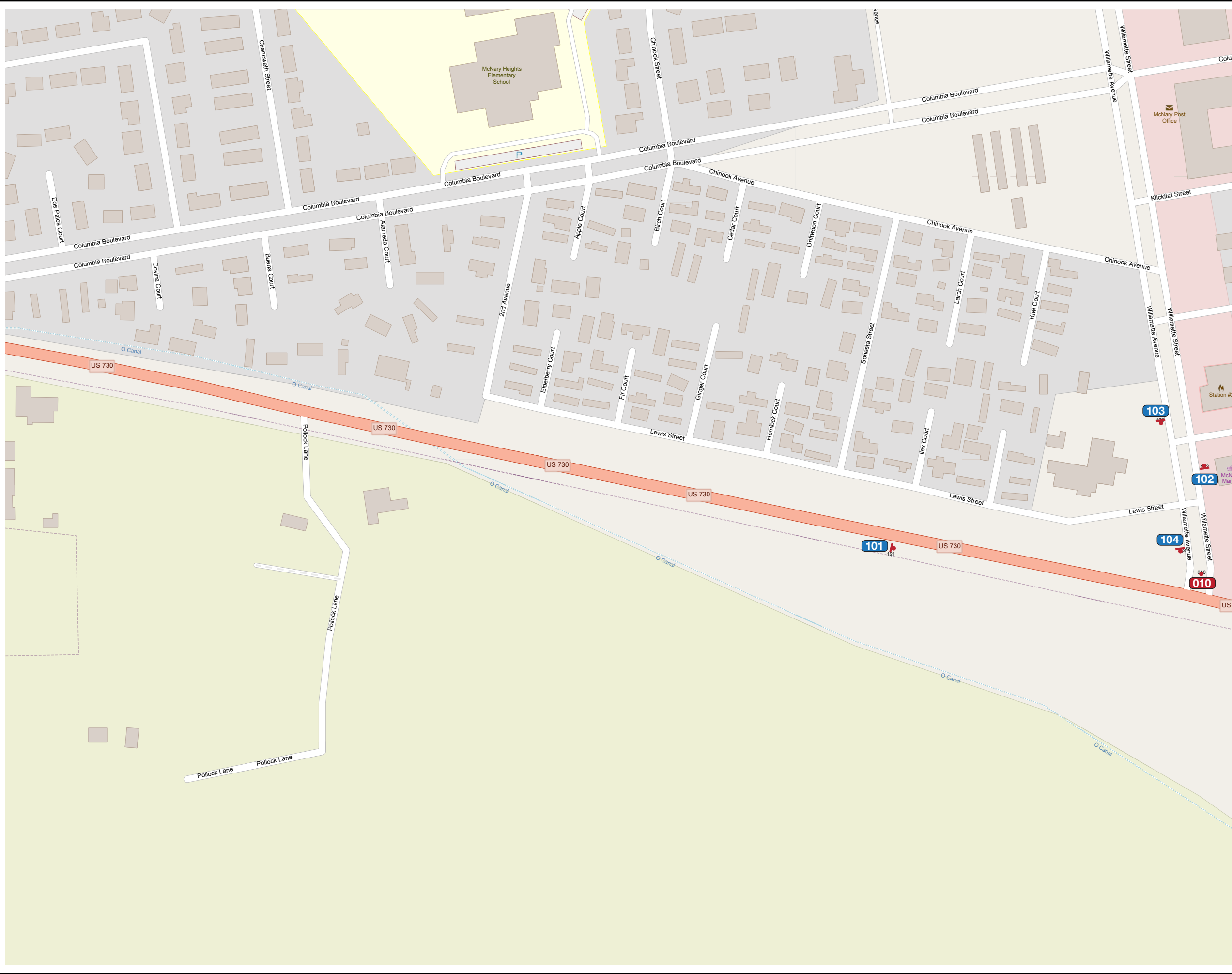
4. Utilize the above Legend to help determine sign types, and other details of location.

ENVIRONMENTS & EXPERIENCES

merJe

120 North Church Street
Suite 208
West Chester, PA 19380
T 484.266.0648
www.merjedesign.com

DATE	04/02/23	CLIENT / PROJECT
DRAWN BY:	GS	
<div>These drawings are meant for DESIGN INTENT ONLY and are not for construction. Contractor shall verify and be responsible for all dimensions and conditions of the job. Contractor shall be familiar with the site and conditions it presents. This office must be notified of any variations from the dimensions and conditions shown on this drawing. Shop drawings and details must be submitted to this office for approval prior to proceeding with fabrication. All copy shall be proofread by client and legal requirements checked by legal department.</div>		Umatilla, OR Wayfinding and Signage System
REVISIONS		PROJECT NO.
		SHEET TITLE
		Sign Location Plans City-Wide
		SHEET NO.
		SL.12



SPECIFICATIONS

Refer to the Wayfinding and Signage System design intent documentation for sign type drawings, material call-outs and installation methods.

Refer to the Wayfinding and Signage System message schedule for all sign type messages, location numbers, quantities, and specific location details.

SIGNAGE LEGEND

001

Gateways / District ID

100

Vehicular

500

Parking

600

Pedestrian Directional

700

Pedestrian Kiosk

900

Parks - Trail Signage

900

Identification Signage

NOTES:

1. General sign locations are provided on these plan sheets.

2. The Message Schedule provides more detailed guidance of sign location in the Remarks column.

3. Refer to the Message Schedule for the final messages of each sign.

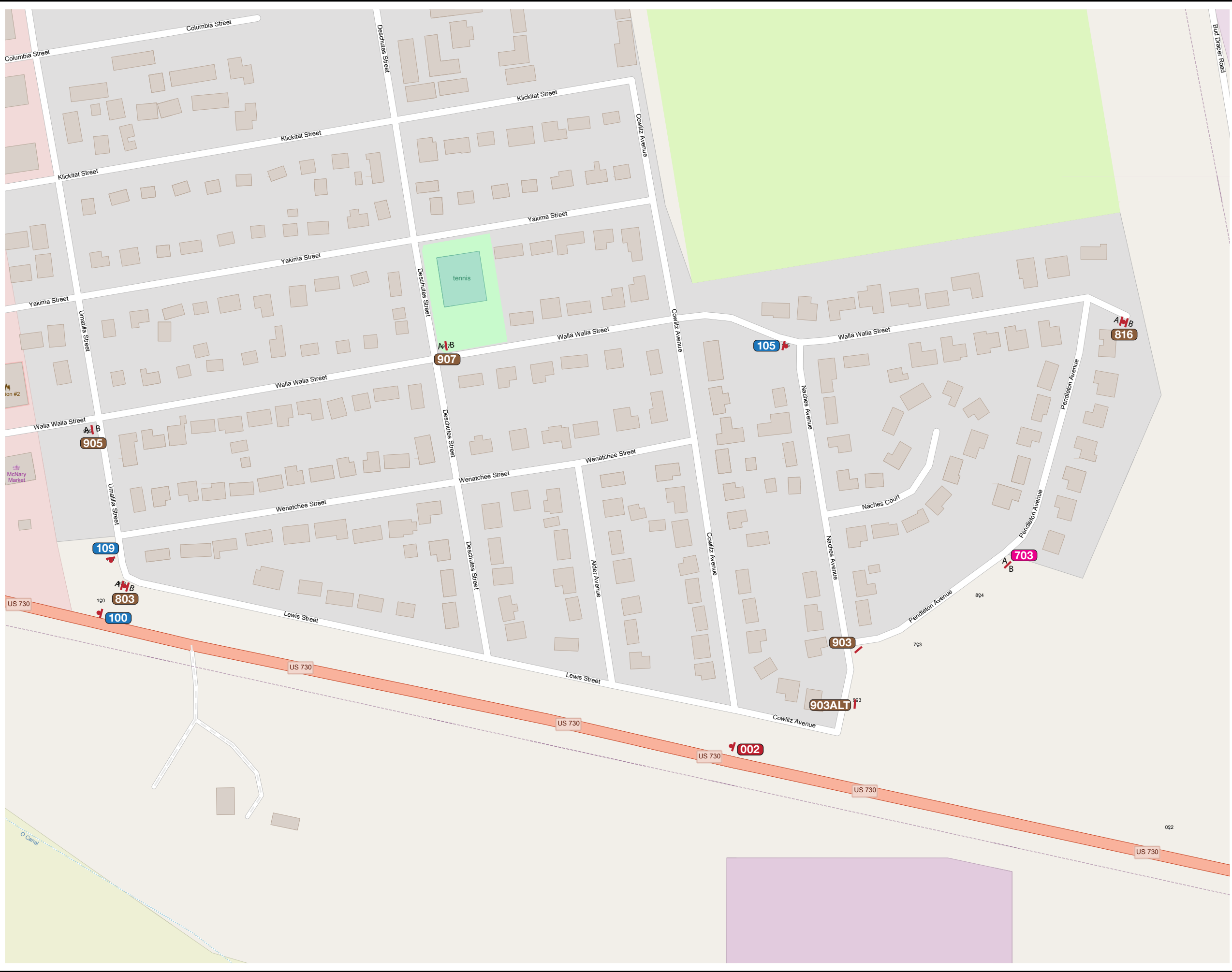
4. Utilize the above Legend to help determine sign types, and other details of location.

ENVIRONMENTS & EXPERIENCES

merJe

120 North Church Street
Suite 208
West Chester, PA 19380
T 484.266.0648
www.merjedesign.com

DATE	04/02/23	CLIENT / PROJECT
DRAWN BY:	GS	
<div>These drawings are meant for DESIGN INTENT ONLY and are not for construction. Contractor shall verify and be responsible for all dimensions and conditions of the job. Contractor shall be familiar with the site and conditions it presents. This office must be notified of any variations from the dimensions and conditions shown on this drawing. Shop drawings and details must be submitted to this office for approval prior to proceeding with fabrication. All copy shall be proofread by client and legal requirements checked by legal department.</div>		Umatilla, OR Wayfinding and Signage System
REVISIONS		PROJECT NO.
		SHEET TITLE
		Sign Location Plans City-Wide
		SHEET NO.
		SL.13



SPECIFICATIONS

Refer to the Wayfinding and Signage System design intent documentation for sign type drawings, material call-outs and installation methods.

Refer to the Wayfinding and Signage System message schedule for all sign type messages, location numbers, quantities, and specific location details.

SIGNAGE LEGEND

- 001 Gateways / District ID
- 100 Vehicular
- 500 Parking
- 600 Pedestrian Directional
- 700 Pedestrian Kiosk
- 900 Parks - Trail Signage
- 900 Identification Signage

NOTES:

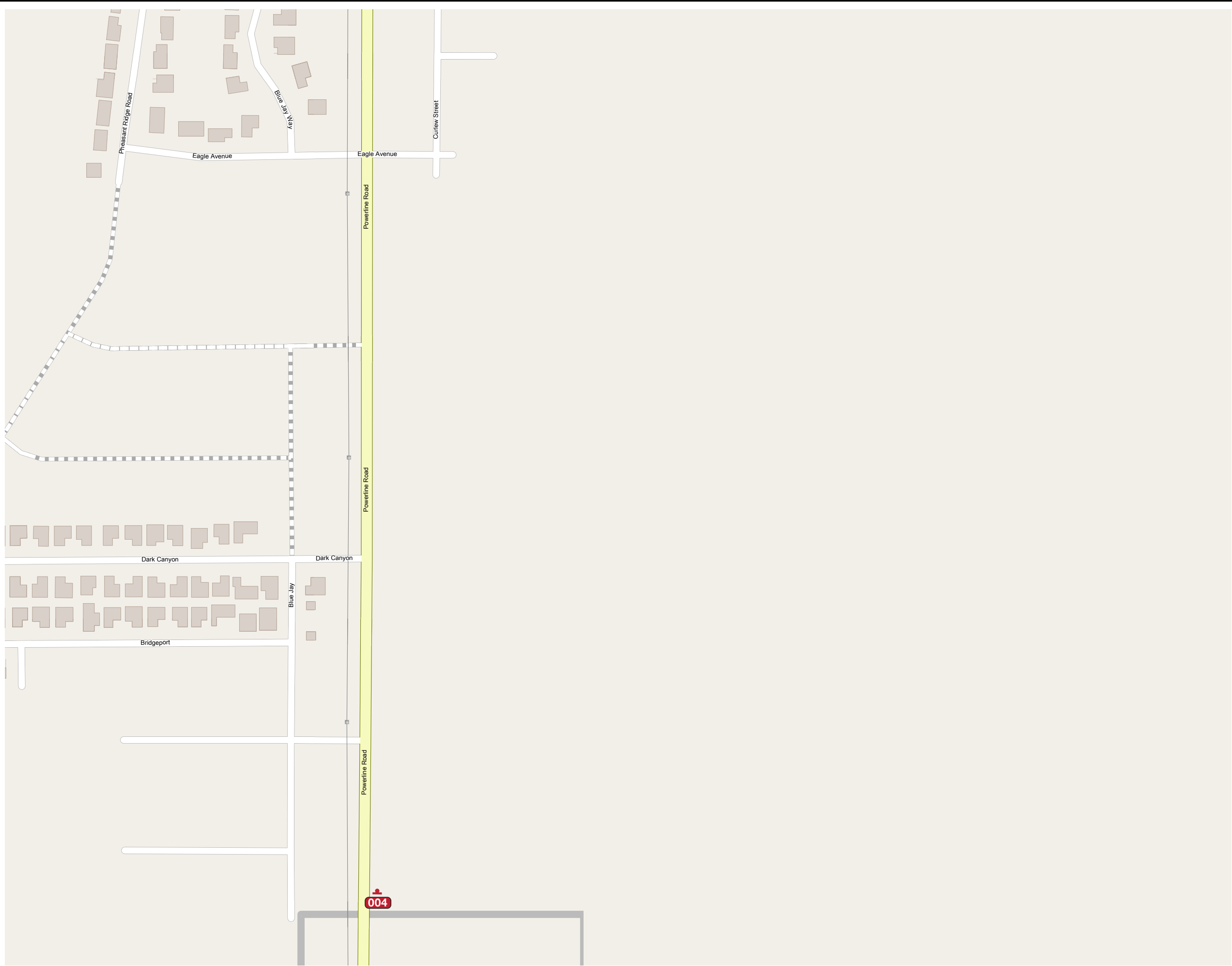
- General sign locations are provided on these plan sheets.
- The Message Schedule provides more detailed guidance of sign location in the Remarks column.
- Refer to the Message Schedule for the final messages of each sign.
- Utilize the above Legend to help determine sign types, and other details of location.

ENVIRONMENTS & EXPERIENCES

merJe

120 North Church Street
Suite 208
West Chester, PA 19380
T 484.266.0648
www.merjedesign.com

DATE	04/02/23	CLIENT / PROJECT	Umatilla, OR Wayfinding and Signage System
DRAWN BY:	GS		
These drawings are meant for DESIGN INTENT ONLY and are not for construction. Contractor shall verify and be responsible for all dimensions and conditions of the job. Contractor shall be familiar with the site and conditions it presents. This office must be notified of any variations from the dimensions and conditions shown on this drawing. Shop drawings and details must be submitted to this office for approval prior to proceeding with fabrication. All copy shall be proofread by client and legal requirements checked by legal department.		PROJECT NO.	
		SHEET TITLE	Sign Location Plans City-Wide
REVISIONS		SHEET NO.	SL.14



SPECIFICATIONS

Refer to the Wayfinding and Signage System design intent documentation for sign type drawings, material call-outs and installation methods.

Refer to the Wayfinding and Signage System message schedule for all sign type messages, location numbers, quantities, and specific location details.

SIGNAGE LEGEND

001

Gateways / District ID

100

Vehicular

500

Parking

600

Pedestrian Directional

700

Pedestrian Kiosk

900

Parks - Trail Signage

900

Identification Signage

NOTES:

1. General sign locations are provided on these plan sheets.

2. The Message Schedule provides more detailed guidance of sign location in the Remarks column.

3. Refer to the Message Schedule for the final messages of each sign.

4. Utilize the above Legend to help determine sign types, and other details of location.

ENVIRONMENTS & EXPERIENCES

merJe

120 North Church Street
Suite 208
West Chester, PA 19380
T 484.266.0648
www.merjedesign.com

DATE	04/02/23	CLIENT / PROJECT
DRAWN BY:	GS	
<div>These drawings are meant for DESIGN INTENT ONLY and are not for construction. Contractor shall verify and be responsible for all dimensions and conditions of the job. Contractor shall be familiar with the site and conditions it presents. This office must be notified of any variations from the dimensions and conditions shown on this drawing. Shop drawings and details must be submitted to this office for approval prior to proceeding with fabrication. All copy shall be proofread by client and legal requirements checked by legal department.</div>		Wayfinding and Signage System
REVISIONS		PROJECT NO.
		SHEET TITLE
		Sign Location Plans City-Wide
		SHEET NO.
		SL.15

SL-PHOTO | Sign Location
Photo Details